

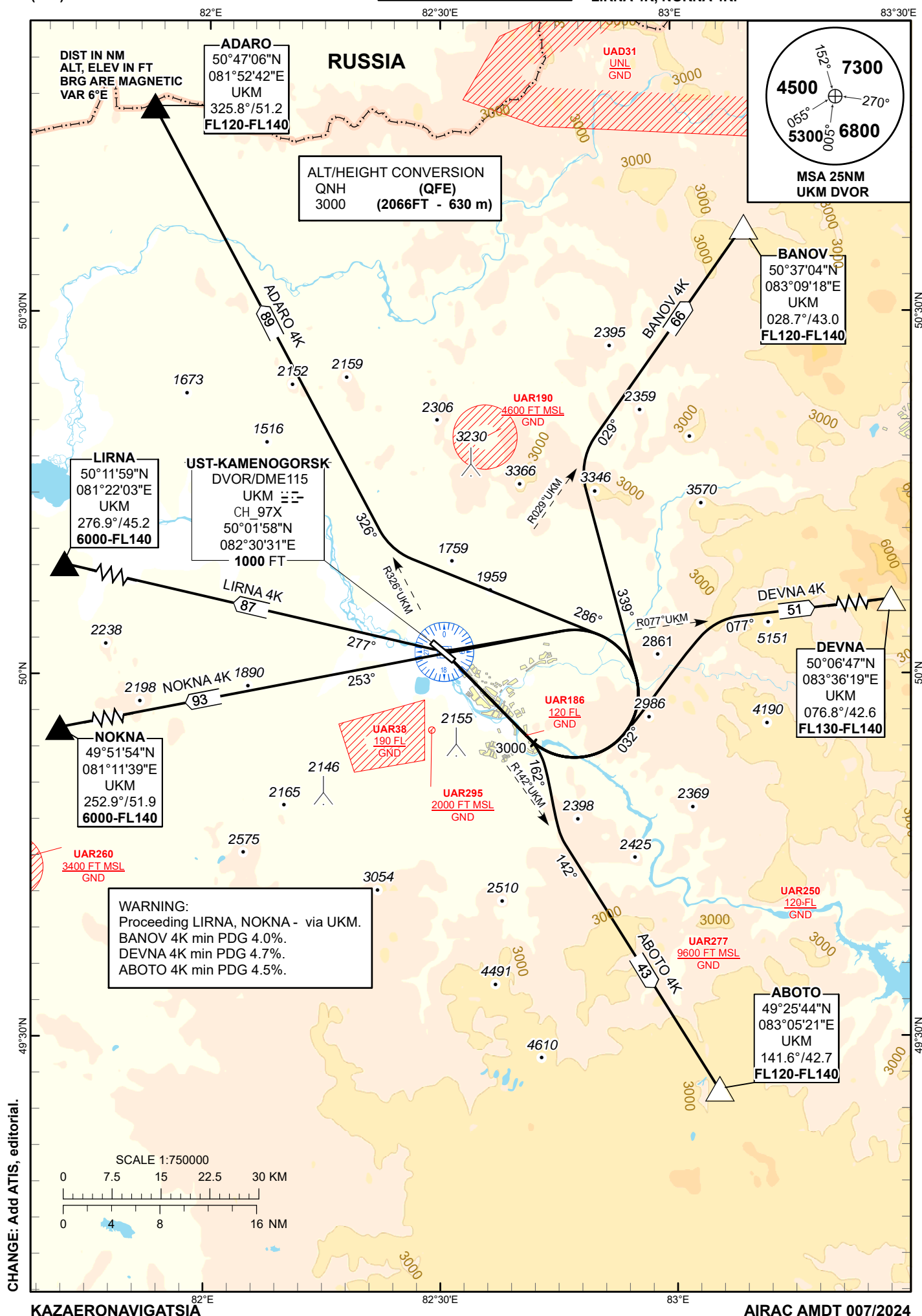
STANDARD DEPARTURE  
CHART - INSTRUMENT  
(SID) - ICAO

TRANSITION ALTITUDE  
10000 FT

UST-KAMENOGORSK TOWER 130.1  
UST-KAMENOGORSK ATIS (EN) 124.2  
UST-KAMENOGORSK ATIS (RU) 127.7

ABOTO 4K, ADARO 4K,  
BANOV 4K, DEVNA 4K,  
LIRNA 4K, NOKNA 4K.

UST-KAMENOGORSK  
RWY 12



<b>STANDARD DEPARTURE ROUTES – INSTRUMENT (SID) UST-KAMENOGORSK RWY 12</b>
<b>BANOV 4K</b> After take-off climb straight ahead to 3000 FT, turn LEFT on track 339° until intercept R 029° UKM, then proceed to BANOV R 028.7° D 43.0 UKM. Cross BANOV at FL120-FL140.
<b>DEVNA 4K</b> After take-off climb straight ahead to 3000 FT, turn LEFT on track 032° until intercept R 077° UKM, then proceed to DEVNA R 076.8° D 42.6 UKM. Cross DEVNA at FL130-FL140.
<b>ABOTO 4K</b> After take-off climb straight ahead to 3000 FT, turn RIGHT on track 162° until intercept R 142° UKM, then proceed to ABOTO R 141.6° D 42.7 UKM. Cross ABOTO at FL120-FL140.
<b>NOKNA 4K</b> After take-off climb straight ahead to 3000 FT, turn LEFT to UKM, after crossing UKM proceed on track 253° to NOKNA R 252.9° D 51.9 UKM. Cross NOKNA at 6000-FL140.
<b>LIRNA 4K</b> After take-off climb straight ahead to 3000 FT, turn LEFT to UKM, after crossing UKM turn RIGHT on track 277° to LIRNA R 276.9° D 45.2 UKM. Cross LIRNA at 6000-FL140.
<b>ADARO 4K</b> After take-off climb straight ahead to 3000 FT, turn LEFT on track 286° until intercept R 326° UKM, then proceed to ADARO R 325.8° D 51.2 UKM. Cross ADARO at FL120-FL140.